

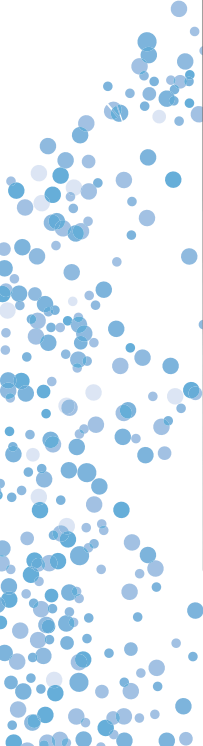
OPTIMIZED MOBILITY
WITH A MULTI-USE KIOSK

STRADA S5 GENERATION 3



MAXIMIZE BRAND RECOGNITION AND USER EXPERIENCE FOR YOUR INFORMATION, REGISTRATION AND PAYMENT APPLICATIONS

- Simplified Licence plate registration process thanks to 9.7" touch screen
- Modern sales application with on-line support
- Multiple choices of applications, such as Residents permits, City information and Urban Services applications (EV charging, Alternative products, Couponing...)
- Compliant to ADA standards making accessible information and data input
- Handles all payment methods, such as coins, contact & contactless bankcard & City cards, Mobile Phone payment using NFC technology
- Fine payment application supported by QR code reader*

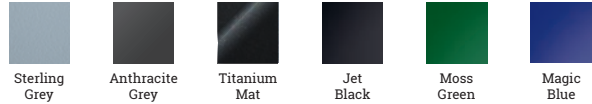


STRADA S5

GENERATION 3



Easy integration into city environment with **additional colors**



Autonomy:

A 4 ways rotation Large Solar panel with a colored base.

Friendly User interface:

9.7" tablet-sized color touch screen reinforced with a 6mm-thick tempered guard glass. Display of videos, animated pictograms, text, maps and dynamic menus to guide the user in real time.

Payment Card acceptance:

Modular Card reader kit "Flowbird Pay" combining M1000 Card reader, P1000 PINPad and A1000 Contactless reader certified PCI PTS V4.x. Flowbird Pay and Archipel allows Pre-payment, Check-in Check-out and Recall with supported Acquirers.

Coin acceptance:

Flowbird's Patented Coin selector accepting up-to 14 different coins and/or tokens.

ArchiPEL:

PCI-DSS centralized payment platform.

The **barcode reader** enables to read any 1D-2D code on any support.*

Flowbird's patented **Graphical printer** can print horizontal and vertical texts and logos on paper or self-adhesive tickets with Premium quality for long and severe exposure. Strada S5 also supports Digital receipts over SMS and e-mail.

5 levels of Cash collection security compliant with European Standard **EN 12414:2020** and adjustable for any type of city environment:

- from P0 to P4,
- with mechanical or electronic lock,
- with standard, reinforced or armoured collection vault.

In option, **adaptive pedestals** to increase the housing height.

*coming soon.